

Accessibility Links

- Skip to main content
- Skip to CBC accessibility page

Winnipeg
change

-8°C Cloudy

CBC Global Navigation

- CBC.ca
 - News news drop down menu
 - Sports sports drop down menu
 - Music
 - Radio Radio Menu
 - TV TV Menu
 - My Region Menu
 - More CBC Menu
 - Watch Watch Menu
 - Listen Listen Menu
- Search
- Sign Up
 - Log In

CBC CBCnews

Manitoba
LIVE Manitoba More Streams
Radio One
Listen Live



CBC News Navigation

- Home
- News
- Events
- Scene
- Weather
- Programs
- Video
- Audio
- Other Regions
- Contact Us
- Scene
- On Air
- Books
- Music
- Food
- Theatre & Dance
- Film & Visual Art
- Other Regions
- British Columbia
- Kamloops
- Calgary
- Edmonton
- Saskatchewan
- Manitoba
- Windsor
- Toronto
- Sudbury
- Thunder Bay
- Ottawa
- Montreal
- New Brunswick
- Prince Edward Island
- Nova Scotia
- Newfoundland & Labrador
- North



Composer channels cancer experiences in new work

Posted by Sandra Thacker, SCENE Producer | Saturday February 2, 2013

Most Recent

- Watch
 - Listen
- Show previous slide



Connor



Composer Vincent Ho (WSO), Gwenda Nemerofsky (Ken Lee)

This piece is my response to the preciousness of life, the importance of the little things that make life worth living and how important some people are in our lives. —Vincent Ho, composer
Cancer is a disease that touches everyone. And when a friend's struggle with cancer touched composer Vincent Ho, he responded - by drawing on that experience and channeling it into a new composition.

That new work is called *From Darkness to Light: A Spiritual Journey*. It's part of a continuing collaboration with Dame Evelyn Glennie that began last year when Vince wrote *The Shaman Percussion Concerto* for her.

This new work is dedicated to the memory of his friend, Dutch-American painter Luc Leestemaker, who was diagnosed with cancer and painted throughout his illness. Both his paintings and Ho's composition express the horrors of the disease and the fight people face. It's essentially Ho's personal response to cancer.

But Ho didn't just rely on his own emotions for inspiration. He opened up a dialogue with a number of people going through cancer treatment and heard their stories.

One of the people he spoke to was Winnipegger Gwenda Nemerofsky. She was diagnosed with a very aggressive recurrent form of gynecological cancer in August 2011. Since then Nemerofsky has endured surgery, radiation and she is on her fourth type of chemotherapy.

According to Nemerofsky, having cancer has changed everything in her life. "I'm one of those people who likes to know what's happening and plan a lot" she says. "And now there are so many unknowns. There's so much I can't plan for. It's affected my feeling of well-being. I don't have energy. I can't work as much as I used to and I can't play with my granddaughter in the same way."

Nemerofsky admired Ho's work and agreed to share her experiences with him. "The idea of being a part of this was very touching to me and very meaningful. Vince is easy to talk to. I cried a lot. I kind of unloaded on him, poor guy."

Ho feels that through the process, he learned a lot about himself. "I approach composing like a method actor. I really need to get into the emotional headspace. So I tried to imagine what it was like to be in the shoes of someone who's going through that."

While he was writing last May, Leestemaker died. "That really hit home for me. And a month later I experienced the birth of my first child. So during the creation process I was experiencing the extremities of loss and gain."

"This piece is my response to the preciousness of life, the importance of the little things that make life worth living and how important some people are in our lives," he says.

Nemerofsky can't wait for the premiere. "It's very meaningful for me. I'm going to be listening hard to hear myself in that piece. It feels like it's a bit of a legacy as well. It's something that will be there always, even when I'm not."

Hear From Darkness to Light: A Spiritual Journey featuring the Winnipeg Symphony Orchestra with Dame Evelyn Glennie on Saturday February 2, 8:00 p.m. at the Centennial Concert Hall.

Like 3
Tweet 2
0
1

Related Links

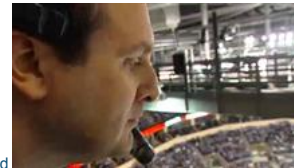
Dame Evelyn Glennie gets Bookmarked
Steve Reich on "Different Trains"

External Links

WSO New Music Festival
Composer Vincent Ho website
(Note: CBC does not endorse and is not responsible for the content of external links.)



Derragh The



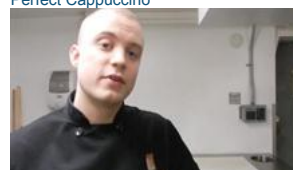
Penelopiad
Winnipeg Jets' Music Man



Ed's Garage



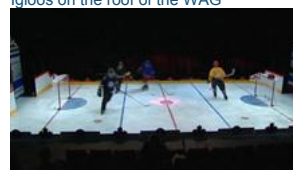
Making the
Perfect Cappuccino



How to shuck



an oyster
Igloos on the roof of the WAG



The Big
League

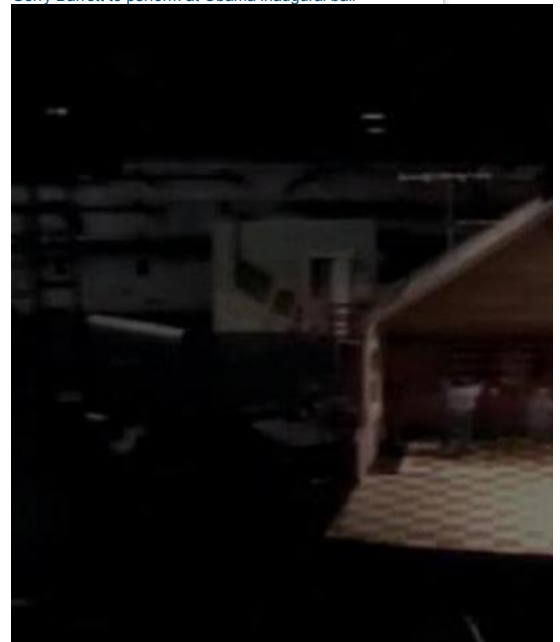
Comments (0)

Hide comments

Log in or Sign up to submit your comment.



Gerry Barrett to perform at Obama inaugural ball



Gone With the Wind Time Lapse Set Build



Music for Ana



Magical

Mystery Munsch



Nutcracker



Dr. Seuss' The



Cat in the Hat
Winnipeg's Contemporary Dancers featuring Mark



Medrano
Miracle on South Division Street
Show next slide

POLAR RAY-O-MAX WINDOWS™

Send Your Window Payments On Holiday

No Interest, No Payment Until Summer '13
Order Now, Install in Spring, Pay in Summer

[f](#) [t](#) [p](#)

Stay Connected with Manitoba Scene

- RSS
- Facebook
- Twitter
- YouTube
- Email

Latest Scene Headlines



Chef Ben Kramer picks tunes to energize the kitchen
Jazz musician overcomes brain injury with music
CBC Music's Searchlight contest looks for Canada's best new artist

Rabbi Steven Greenberg picks books on religion, moral intuition and gun lobbies

Doctor reveals five things people don't know about the ER

Search Scene

CBC Global Footer

CBC.ca

- Aboriginal
- Books
- Contests
- Digital Archives
- Documentaries
- Kids
- Kids' CBC Preschool
- Kids' CBC Wonder World
- Music
- News

- [Parents](#)
- [Program Guide](#)
- [Radio](#)
- [Sports](#)
- [Television](#)
- [CBC Member Centre](#)
- [CBC Player](#)
- [CBC Shop](#)
- **Corporate**
- [About CBC](#)
- [Transparency and Accountability](#)
- [Jobs](#)
- [Production Facilities](#)
- [Mobile Production Rentals](#)
- [Ombudsman](#)
- [CBC: Get the Facts](#)
- [Independent Producers](#)
- [Pitch a Radio or Audio Program](#)
- [Program and Content Sales](#)
- [Archive Sales](#)
- [Educational Sales](#)
- [Image Research Library & Still Photos](#)
- [Tapes & Transcripts](#)
- [Digital TV](#)
- **Stay Connected**
- [Mobile](#)
- [RSS](#)
- [Podcasts](#)
- [Member Services: Newsletters & Alerts](#)
- **CBC Links**
- [Terms Of Use](#)
- [Reuse & Permissions](#)
- [Advertise](#)
- [Privacy](#)
- [Site Map](#)
- [Contact Us](#)
- [CBC Radio-Canada](#)
- [Copyright © CBC 2013](#)
- [cbc.radio-canada.ca](#)
- [cbc.ca](#)
- [radio-canada.ca](#)